

# State of Wyoming Corner Record

(In compliance with the *CORNER PERPETUATION AND FILING ACT*, Wyoming Statutes, 1997 Section 33-29-140 et. se., and the Rules and Regulations of the Board of Professional Engineers and Professional Land Surveyors)

Reverse side of this form may be used if more space is needed.

Record of original survey and citation of source of historical information (if corner is lost or obliterated). Description of corner monumentation evidence found and/or monument and accessories established to perpetuate the location of this corner. Sketch of relative location of monument, accessories, and reference points with course and distance to adjacent corner(s) (if determined in this survey). Method and rationale for re-establishment of lost or obliterated corner.

**RECORD:** G.L.O. survey by Henry G. Hay in 1873; "80.00 ch: a Sandstone 18x8x7 set 12 inches deep marked with 4 notches on east and 4 notches on south"

**FOUND:** Fractured, partially marked Sandstone in such condition that size is unknown next to 12 inch diameter cedar post on an east - west fence line.

**Re-monumentation:** Set 2.5" Alum. cap on 3/4x30 inch rebar 0.3 above ground, placed fractured stones around rebar.

NAD83, position:

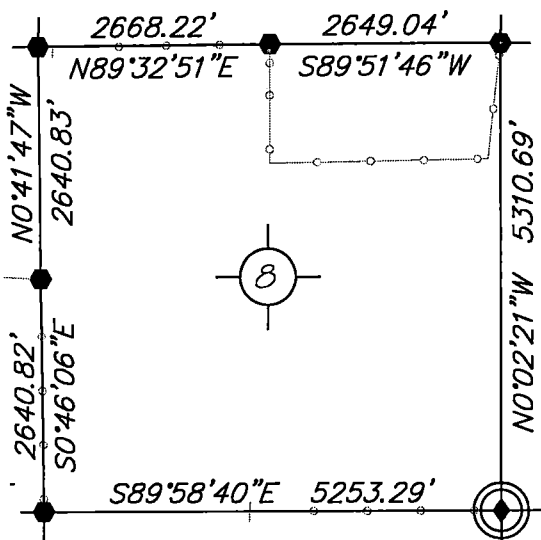
Point #	North	East	Elev.
1860172	378632.38	950041.28	5155.37

*NOTE: After extensive work in this township I found many corner stones moved & wired to fences in low areas.*

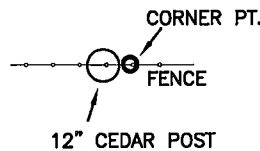
**NOTE:** BEARINGS AND DISTANCES SHOWN HEREON ARE BASED UPON GRID USING NAD83 WYOMING EAST ZONE AND TRIMBLE R8 GPS OBSERVATION

### Monument Location

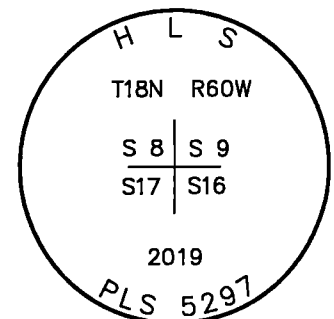
corner referenced this record =



### SKETCH



LARAMIE COUNTY



### Monument Inscription

Date of Field Work: May 25, 2019

Office Reference: DRG-21864, Pt.1860172

### Cross Index Plat

1 2 3 4 5 6 7 8 9 10 11 12 13 14 15 16 17 18 19 20 21 22 23 24 25																										
A																										A
B	+	+	+	+	+	+	+	+	+	+	+	+	+	+	+	+	+	+	+	+	+	+	+	+	+	B
C	+	6	+	+	5	+	+	4	+	+	3	+	+	2	+	+	1	+	+	+	+	+	+	+	+	C
D	+	+	+	+	+	+	+	+	+	+	+	+	+	+	+	+	+	+	+	+	+	+	+	+	+	D
E	+	+	+	+	+	+	+	+	+	+	+	+	+	+	+	+	+	+	+	+	+	+	+	+	+	E
F	+	+	+	+	+	+	+	+	+	+	+	+	+	+	+	+	+	+	+	+	+	+	+	+	+	F
G	+	7	+	+	8	+	+	9	+	+	10	+	+	11	+	+	12	+	+	+	+	+	+	+	+	G
H	+	+	+	+	+	+	+	+	+	+	+	+	+	+	+	+	+	+	+	+	+	+	+	+	+	H
J	+	+	+	+	+	+	+	+	+	+	+	+	+	+	+	+	+	+	+	+	+	+	+	+	+	J
K	+	+	+	+	+	+	+	+	+	+	+	+	+	+	+	+	+	+	+	+	+	+	+	+	+	K
L	+	18	+	+	17	+	+	16	+	+	15	+	+	14	+	+	13	+	+	+	+	+	+	+	+	L
M	+	+	+	+	+	+	+	+	+	+	+	+	+	+	+	+	+	+	+	+	+	+	+	+	+	M
N	+	+	+	+	+	+	+	+	+	+	+	+	+	+	+	+	+	+	+	+	+	+	+	+	+	N
O	+	+	+	+	+	+	+	+	+	+	+	+	+	+	+	+	+	+	+	+	+	+	+	+	+	O
P	+	19	+	+	20	+	+	21	+	+	22	+	+	23	+	+	24	+	+	+	+	+	+	+	+	P
Q	+	+	+	+	+	+	+	+	+	+	+	+	+	+	+	+	+	+	+	+	+	+	+	+	+	Q
R	+	+	+	+	+	+	+	+	+	+	+	+	+	+	+	+	+	+	+	+	+	+	+	+	+	R
S	+	+	+	+	+	+	+	+	+	+	+	+	+	+	+	+	+	+	+	+	+	+	+	+	+	S
T	+	30	+	+	29	+	+	28	+	+	27	+	+	26	+	+	25	+	+	+	+	+	+	+	+	T
U	+	+	+	+	+	+	+	+	+	+	+	+	+	+	+	+	+	+	+	+	+	+	+	+	+	U
V	+	+	+	+	+	+	+	+	+	+	+	+	+	+	+	+	+	+	+	+	+	+	+	+	+	V
W	+	+	+	+	+	+	+	+	+	+	+	+	+	+	+	+	+	+	+	+	+	+	+	+	+	W
X	+	31	+	+	32	+	+	33	+	+	34	+	+	35	+	+	36	+	+	+	+	+	+	+	+	X
Y	+	+	+	+	+	+	+	+	+	+	+	+	+	+	+	+	+	+	+	+	+	+	+	+	+	Y
Z	+	+	+	+	+	+	+	+	+	+	+	+	+	+	+	+	+	+	+	+	+	+	+	+	+	Z
1 2 3 4 5 6 7 8 9 10 11 12 13 14 15 16 17 18 19 20 21 22 23 24 25																										

Firm/Agency, Address

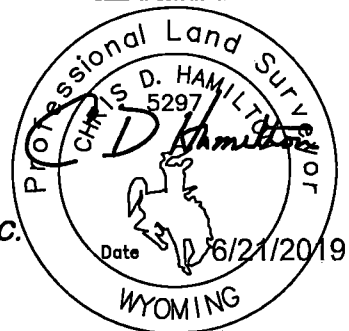
this corner record provided by:

**HAMILTON  
LAND  
SURVEYING**

UNDER CONTRACT TO:

**DRG** **RIFFIN & ASSOCIATES, INC.**  
1414 ELK ST., SUITE 202  
ROCK SPRINGS, WY 82901  
(307) 362-5028

This corner record was prepared by me or under my direction and supervision.  
SEAL & SIGNATURE



RECP #: 756330

RECORDED 7/1/2019 AT 10:41 AM BK# 2627 PG# 844

Debra K. Lee, CLERK OF LARAMIE COUNTY, WY PAGE 1 OF 1

Debra Lee  
County Clerk

Deputy

STATE of WYOMING, Office of Clerk & Recorder, County of Laramie

this block provided for county filing documentation

Corner Name: Southeast, Section: 8, T 18N, R 60W, 6th P.M., Cross-Index No.: J-09

SBRPEPLS/PLSW: March 1994; PLSW January 1998

County: LARAMIE, Wyoming